

dSEA



UNIVERSITÀ
DEGLI STUDI
DI PADOVA

WELCOME DAY DSEA

SEPTEMBER 28, 2017

Instructions by
International Relations Office,
Department of Economics and
Management

WELCOME TO THE DEPARTMENT OF ECONOMICS AND MANAGEMENT!



INTERNATIONAL RELATIONS OFFICE

People

Prof. Amedeo Pugliese – Assistant Dean
International Relations

Giovanna De Angelis – Coordinator,
Student Services

Elisabetta Zanaga – Senior Officer, Int
Relations

Greta Pesce – Officer, Int Relations

WHERE WE ARE?

via Ugo Bassi 1, 5° floor

Office Hours: Monday to Friday from 10-12

CONTACTS:

 www.economia.unipd.it/en

 international.economia@unipd.it

 [DSEA – Dipartimento di Scienze
Economiche e Aziendali Unipd](#)

OUR MSC OFFER

The Department offers 3 fully fledged English Masters of Science:

A. Business Administration

1. Accounting and Finance
2. Management

B. Economics and Finance

1. Banking and Finance
2. Economics

C. Entrepreneurship and Innovation (new)



OUR MSC OFFER

2 years cycle (Intake, September 2018) – 120 ECTS

Selective admission process

Grants eligibility to PhD programmes in Europe

Strong International vocation:

Double degrees / Bilateral Agreements / Summer Schools

Placement and Recruitment both at the National and International levels



RANKINGS

In the last assessment of University teaching 2017, the U of Padova ranked first position among all Italian Universities.

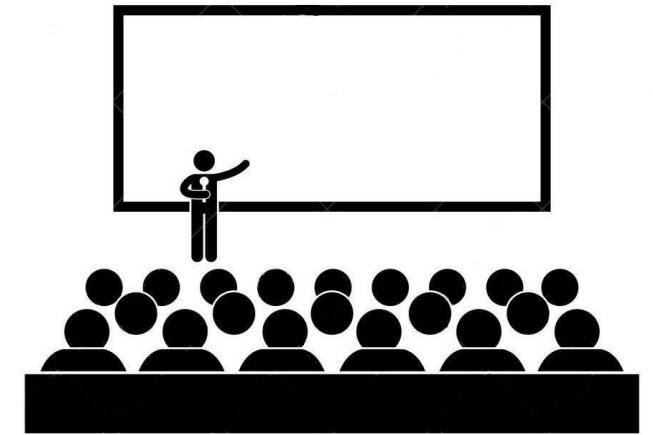


INTENSIVE SUMMER CLASSES

What?

Intensive (5-weeks) classes designed for our International Students:

- Accounting for Decision Making (6 ECTS)
- Behaviour in Organizations (6 ECTS)
- Economics of Social Capital (6 ECTS)
- Principles of Marketing (6 ECTS)



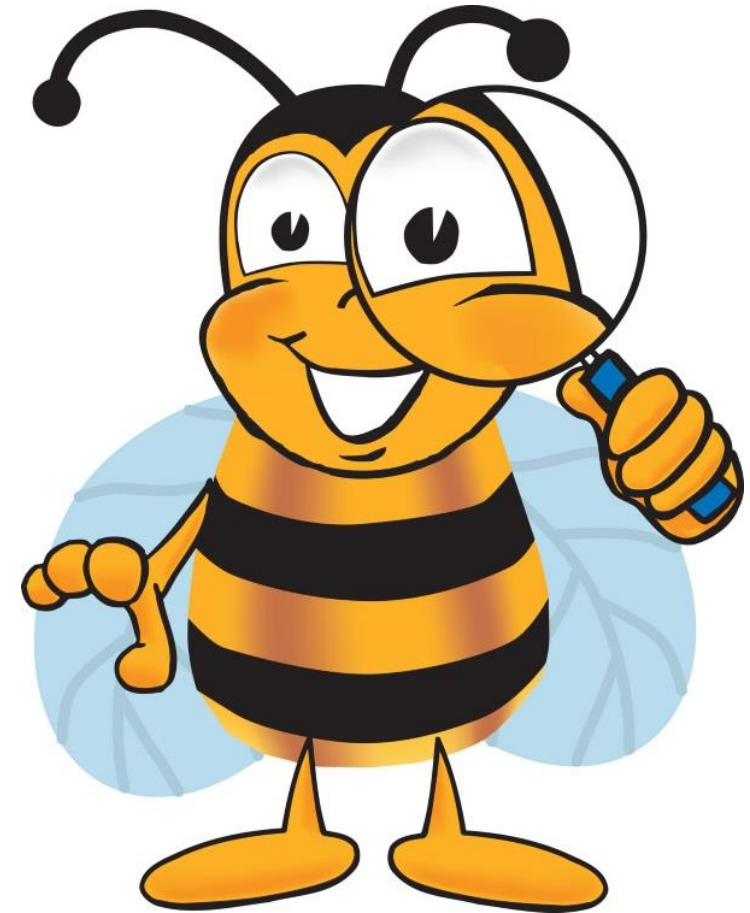
How?

In-class discussion, team work activities, case studies, role playing, audio-visual training, international classes, totally held in English

When?

Classes will start in the first or second week of May until the second week of June (exam included)

ADMINISTRATIVE PROCEDURES



INSTITUTIONAL E-MAIL ADDRESS



It is compulsory using your institutional e-mail address:

name.surname@studenti.unipd.it

If you experience any issues with the activation, please contact the International Tutor or come to our office.

Please note that the institutional e-mail address is needed to access the pc rooms, Moodle and Uniweb platforms.

WHAT TO DO BEFORE YOUR ARRIVAL

BEFORE YOUR ARRIVAL

- 1) Application form
(<http://www.unipd.it/en/node/1420>)
- 2) Accommodation form
(<http://www.unipd.it/en/node/1422>)
- 3) Registration on the online LA platform of the
Department of Economics and Management
(<https://apex.cca.unipd.it/pls/apex/f?p=332>)

UPON YOUR ARRIVAL

- 1) SASSA service
- 2) University's insurance
- 3) Welcome meeting


Please find more precise information at this link:
<http://www.unipd.it/en/node/1310>

LEARNING AGREEMENT — DURING THE MOBILITY

It is allowed changing your LA form,
just one time, during the first 2 weeks of
classes (deadline October 16)

Please use the dedicated platform:
<https://apex.cca.unipd.it/pls/apex/f?p=332>

In order to get the signature of the DSEA
Erasmus Coordinator, please send an e-mail
with the pdf LA in attachment to
international.economia@unipd.it
or come to our office with the printed
document.

 **Erasmus+** Higher Education
Learning Agreement form
Student's name

Section to be completed DURING THE MOBILITY
CHANGES TO THE ORIGINAL LEARNING AGREEMENT

I. EXCEPTIONAL CHANGES TO THE PROPOSED MOBILITY PROGRAMME

Table C: Exceptional changes to study programme abroad or additional components in case of extension of stay abroad

Component code (if any) at the receiving institution	Component title (as indicated in the course catalogue) at the receiving institution	Deleted component	Added component	Reason for change	Number of ECTS credits to be awarded by the receiving institution upon successful completion of the component
		<input type="checkbox"/>	<input type="checkbox"/>		
		<input type="checkbox"/>	<input type="checkbox"/>		
		<input type="checkbox"/>	<input type="checkbox"/>		
		<input type="checkbox"/>	<input type="checkbox"/>		
		<input type="checkbox"/>	<input type="checkbox"/>		
					Total:

Table D: Revised group of educational components in the student's degree that will be replaced at sending institution*

Component code (if any) at the receiving institution	Component title (as indicated in the course catalogue) at the sending institution	Deleted component	Added component	Reason for change	Number of ECTS credits
		<input type="checkbox"/>	<input type="checkbox"/>		
		<input type="checkbox"/>	<input type="checkbox"/>		
					Total:

The student, the sending and the receiving institutions confirm that they approve the proposed amendments to the mobility programme.

Approval by e-mail or signature of the student and of the sending and receiving institution responsible persons.

SUBJECTS, CLASSES & TIMETABLE

Courses Catalogue:

<http://economia.unipd.it/en/services/international-relations/affiliate-international-programs/erasmus>

Timetable:

<http://gestionedidattica.unipd.it/PortaleStudenti/>



ITALIAN LANGUAGE COURSE

The Linguistic Centre offers a free 3 ECTS Italian Language Course to all Erasmus students:

- classes begin on **October 9th**
- 40 hours of teaching: 4 hours per week
- **enrolment until September 28th**

For further details: <http://cla.unipd.it/en/italian-courses/biannual-courses/>



CLASSES & FINAL EXAMS

Moodle

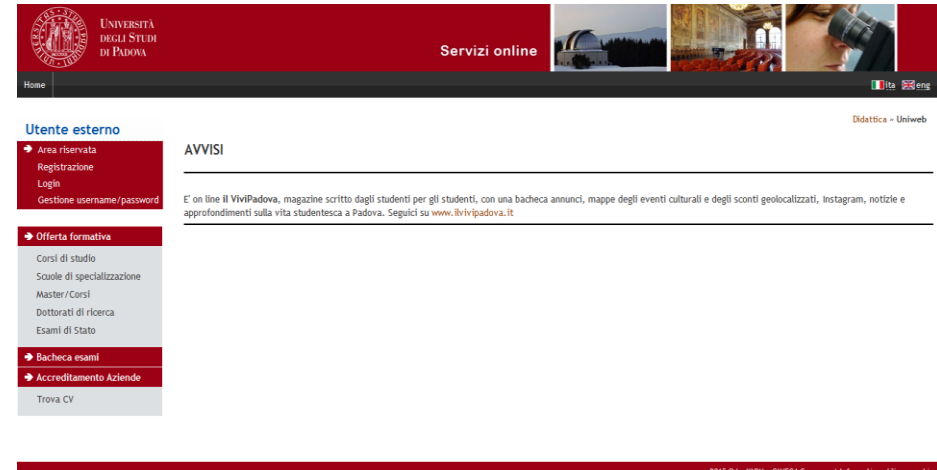
E-learning platform, to download information, teaching material and assessment.



The screenshot shows the Moodle Economia website. At the top, there is a red header with the University of Padua logo and name. Below the header, a navigation bar contains links for HOME, UNIPD, DIPARTIMENTO, UNIWEB, DIDATTICA, and CONTATTI. The main content area features the title "Moodle Economia" and a description: "Piattaforma e-learning di supporto alla didattica del Dipartimento di Scienze Economiche e Aziendali 'M. Fanno' (DSEA)". A "Read More" button is visible. To the right, there is a section for the DSEA (Dipartimento di Scienze Economiche e Aziendali "Marco Fanno") with a list of services: Segreteria Didattica, Servizio Stage & Placement, Servizio Relazioni Internazionali, and Servizio Tutorato, each with an email address.

Uniweb

Web platform, to enrol exams (from 20 to 3 days before the exam), accept/refuse the marks and get the credits for the final transcript of records.



The screenshot shows the Uniweb website. At the top, there is a red header with the University of Padua logo and name. Below the header, a navigation bar contains links for HOME, Servizi online, and a language selector (ita, eng). The main content area is divided into two columns. The left column, titled "Utente esterno", contains links for Area riservata, Registrazione, Login, and Gestione username/password. The right column, titled "AVVISI", contains a link to the Vivipadova magazine. Below the main content area, there is a footer with the text "2015 © by KION a CINEMA Company - Informatica utilizza cookie".

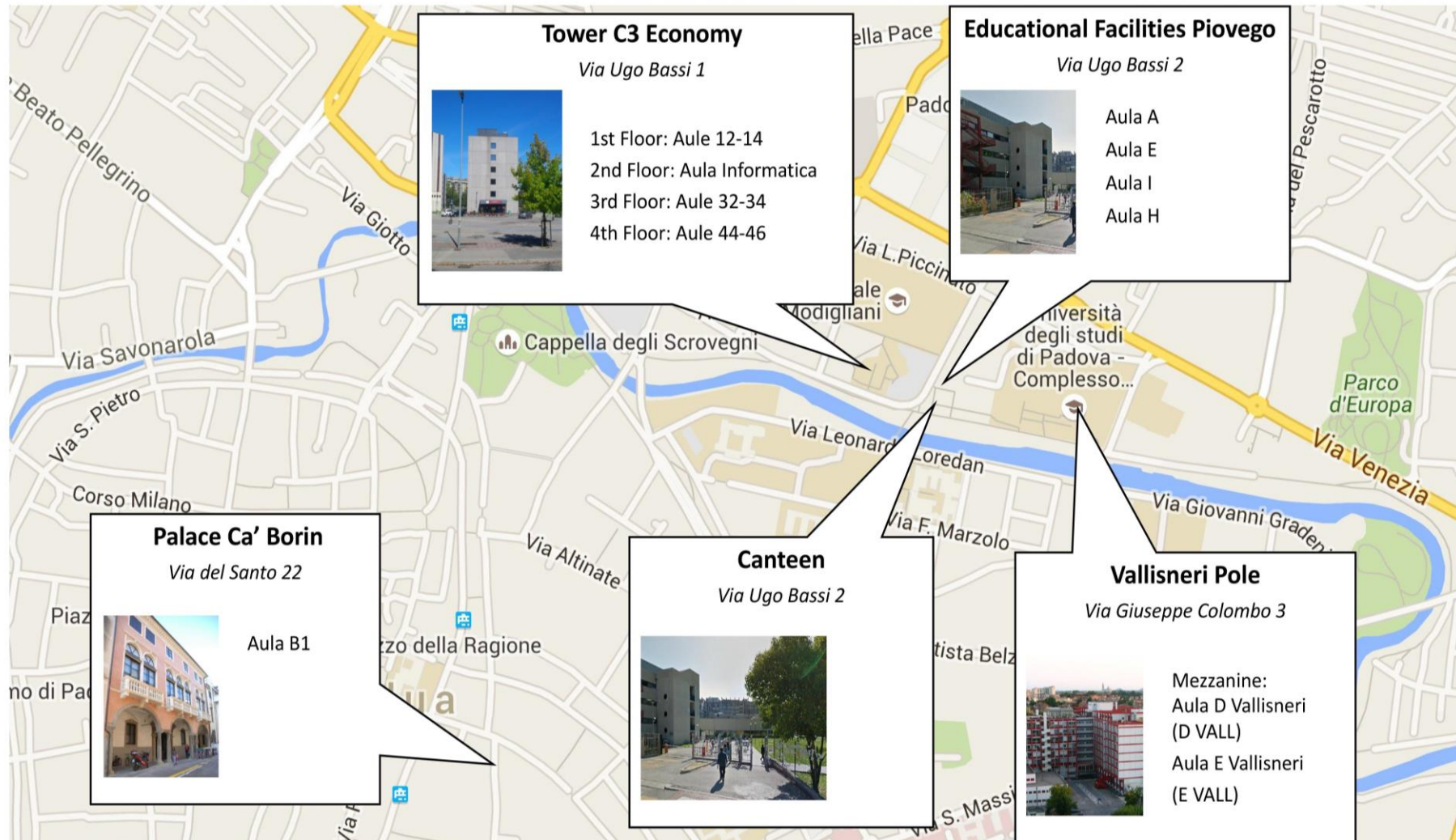
TWO «APPELLI»

You have 2 possibility to pass each exam: the first and second *appello*.

If you want to refuse a grade, you have 7 days (after the publication of the result) of time to do it in Uniweb.

The minimum to pass an exam is **18/30**.





WE ARE SPREAD: THE CAMPUS AND FACILITIES

Teaching
Library
Canteen

AT THE END OF YOUR STAY

Three steps to finalize your Erasmus experience:

- 1) Obtain your Transcript of Records
- 2) Final interview (Uniweb)
- 3) Confirmation of Stay (Central International Relations Office, Palazzo Bo)

Additional information at this link:
<http://www.unipd.it/en/node/1314>.



STUDYING AND LIVING IN PADOVA

- Housing: S.A.S.S.A. service of accomodation; www.sassa.org
- University Welcome Desk: SAOS for VISA-assistance; <http://www.unipd.it/en/node/1456>
- University Language Centre: CLA for Italian Language Courses; www.cla.unipd.it
- Locations (classrooms, libraries, PC rooms...):
<http://www.economia.unipd.it/en/departement/locations-and-openinig-hours>
- University canteens: ESU food service; <http://www.esupd.gov.it/en/our-main-activities/food-services-canteens>
- Erasmus Student Network: ESN Padova; www.esnpadova.it
- Medical Services: <http://www.unipd.it/en/services/health-sports-and-recreation>
- University Sports Centre: CUS Padova; www.cuspadova.it
- Bike Sharing Service: GOODBIKE Padova; www.goodbikepadova.it

CULTURAL ITINERARIES IN PADOVA

- Palazzo Bo and Anatomical Theatre (<http://www.unipd.it/en/node/261>)
- Church of St. Anthony (<http://www.santantonio.org/en>)
- Scrovegni Chapel (<http://www.cappelladeglisrovegni.it/index.php/en/>)
- Botanical Garden (<http://www.ortobotanicopd.it/en>)

For other suggestion about cultural itineraries and to discover Padova, read the information at the following web page:

<http://www.unipd.it/en/discovering-padova-0>



INTERNATIONAL TUTOR

A domestic students available to support international students about several aspects of your life (e.g. classes, how to contact professors, how to enrol exams, activation of the e-mail account, how to use Uniweb and Moodle platforms).

CONTACTS:



international.tutor.unipd@gmail.com



[International Tutors Economia Padova](#)





THANK YOU FOR YOUR PARTICIPATION!

International Relations Staff

dSEA



UNIVERSITÀ
DEGLI STUDI
DI PADOVA

ENJOY YOUR STAY!

Department of Economics and
Management "Marco Fanno"